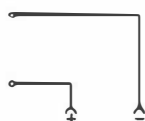


Technical features

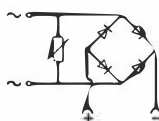
Standard connectors HA type are used for connection off all DC coils.

The HR version must be used when coils work in AC at 50 or 60 Hz, this version include a bridge rectifier composed of four diodes and one protection varistor. The outlet rectified voltage are reduced by 10%; this connector type must be combined with coils A type predisposed for this voltage drop.

HA Type



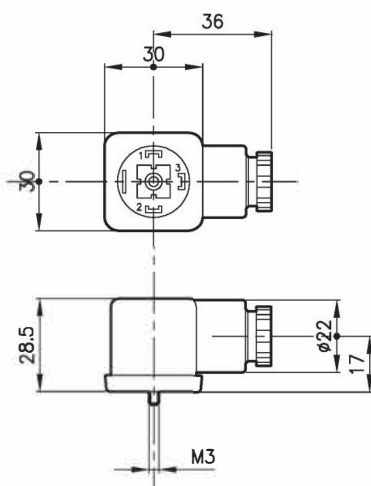
HR Type



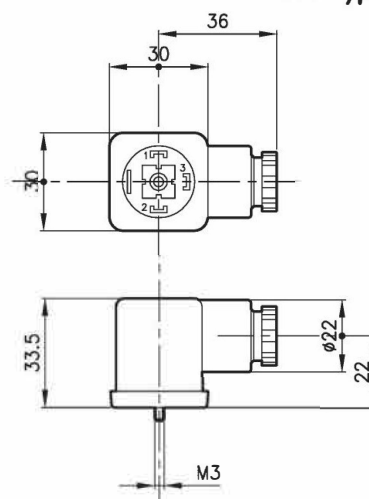
Nominal voltage	Volt	250
Poles number		2 + ↕
Protection		Nylon glass
Contacts seat		Nylon glass
Contacts nominal current	Ampere	10
Contacts max. current	Ampere	16
Contacts resistance	mOhm	4
Cables max. section	mm ²	1.5
Terminal cable		PG9
Cable diameter	mm	6 – 8
Protection class DIN 40050		IP 65
Insulation class VDE 0110		C group
Profiled seal in nitrile		

Dimensions

HA Type



HR Type


Ordering informations

Type

HA = Standard

HR = With rectifier

Color

A = Grey

B = Black

HA-B

Codes:

HA-A 90 538 100

HA-B 90 538 102

HR-A 90 538 101

HR-B 90 538 103

NOTE: Black connectors are preferable.

The emergency override system specifications are conceived to be used by way of exceptions and momentary; a continuous and lasting working is not allowed.

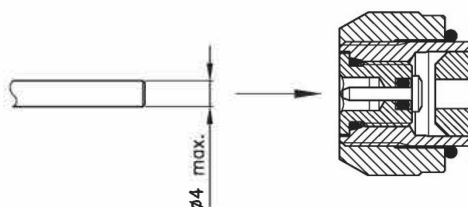
The emergency MO type, PS type and MS type can be foreseen for all ECD 20-30-50 solenoid valves circuits and for circuits 22B1 and 22C1 type (normally open) of solenoid valves EPP 30-50-70 type.

The emergency override PS type and MS type can be assembled also in a second time on solenoid valves which are already prepared in advance with override MO type.

EMERGENCY OVERRIDE MO TYPE

(20-MO 25 011 145)

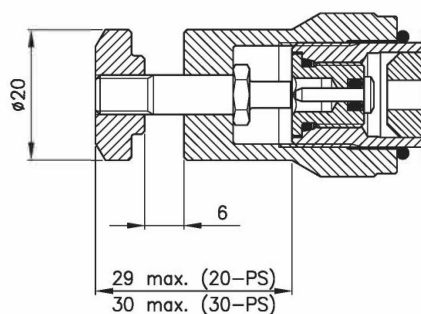
(30-MO 35 011 144)



EMERGENCY OVERRIDE PS TYPE

(20-PS 25 011 174)

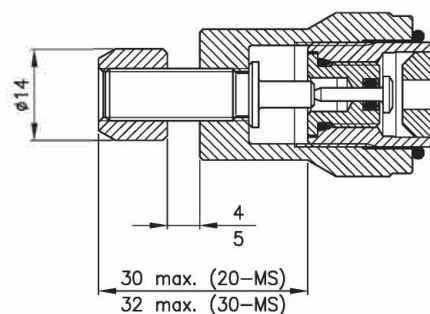
(30-PS 35 011 161)



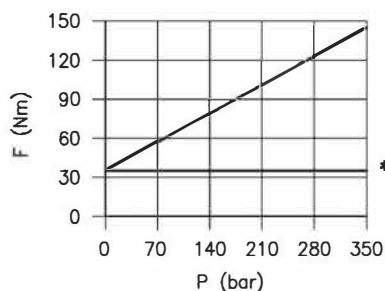
EMERGENCY OVERRIDE MS TYPE

(20-MS 25 011 167)

(30-MS 35 011 195)



WORKING SPECIFICATIONS



* In ECD solenoid valves, pressure in chamber 1 is uninfluential and the necessary force to make the override working is 35 Nm.